



St. Gregorys Crescent, Gravesend, DA12 4JN
Guide price £325,000 Freehold

 3  1  2  C

The Homes Group are delighted to offer to the market this three bedroom end of terrace family home located in Gravesend. The house is situated within a mile of four primary schools and Gravesend Grammar School plus it is within close proximity of local shops and amenities along Valley Drive and at Riverview Park.

The accommodation comprises of an entrance hall, a 16' x 11' living room, a 16' x 10'6 kitchen/diner, a utility room, three bedrooms and first floor bathroom and separate WC.

To the rear is a 55' garden which backs on to playing fields and potential for off road parking subject to landscaping and planning consents.

This property also has the added benefit of being offered with no forward chain.

Entrance Hall

Living Room

16' x 11' (4.88m x 3.35m)

Kitchen/Diner

16' x 10'6 (4.88m x 3.20m)

Utility Room

10'6 x 6'4 (3.20m x 1.93m)

Landing

Bedroom One

14'7 x 11'2 (4.45m x 3.40m)

Bedroom Two

11'6 x 10'6 (3.51m x 3.20m)

Bedroom Three

9'9 x 7'7 (2.97m x 2.31m)

Bathroom

Separate W.C.

Rear Garden

Front Garden

Tenure - Freehold

Council Tax - Band C





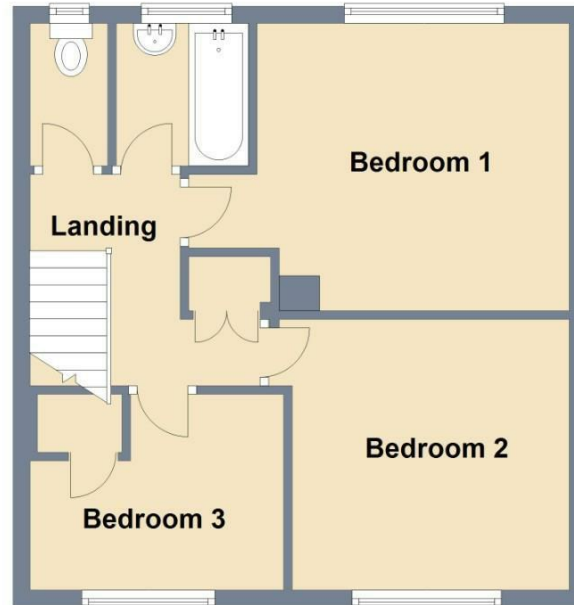
Ground Floor

Approx. 42.2 sq. metres (454.2 sq. feet)



First Floor

Approx. 42.2 sq. metres (454.2 sq. feet)



Total area: approx. 84.4 sq. metres (908.4 sq. feet)



Energy Efficiency Rating		Current	Potential
Very energy efficient - lower running costs			
(92 plus) A			
(81-91) B			85
(69-80) C		72	
(55-68) D			
(39-54) E			
(21-38) F			
(1-20) G			
Not energy efficient - higher running costs			
England & Wales	EU Directive 2002/91/EC		

Viewing

Please contact The Homes Group Office on 01322 875000 if you wish to arrange a viewing appointment for this property or require further information.

These particulars, whilst believed to be accurate are set out as a general outline only for guidance and do not constitute any part of an offer or contract. Intending purchasers should not rely on them as statements of representation of fact, but must satisfy themselves by inspection or otherwise as to their accuracy. No person in this firm's employment has the authority to make or give any representation or warranty in respect of the property.